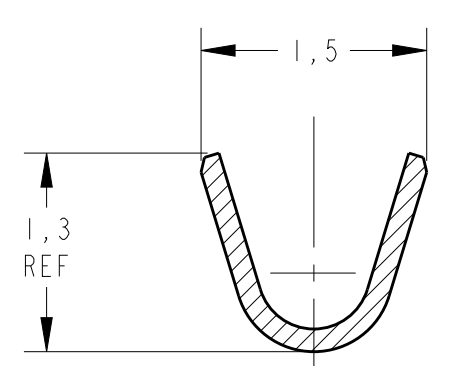
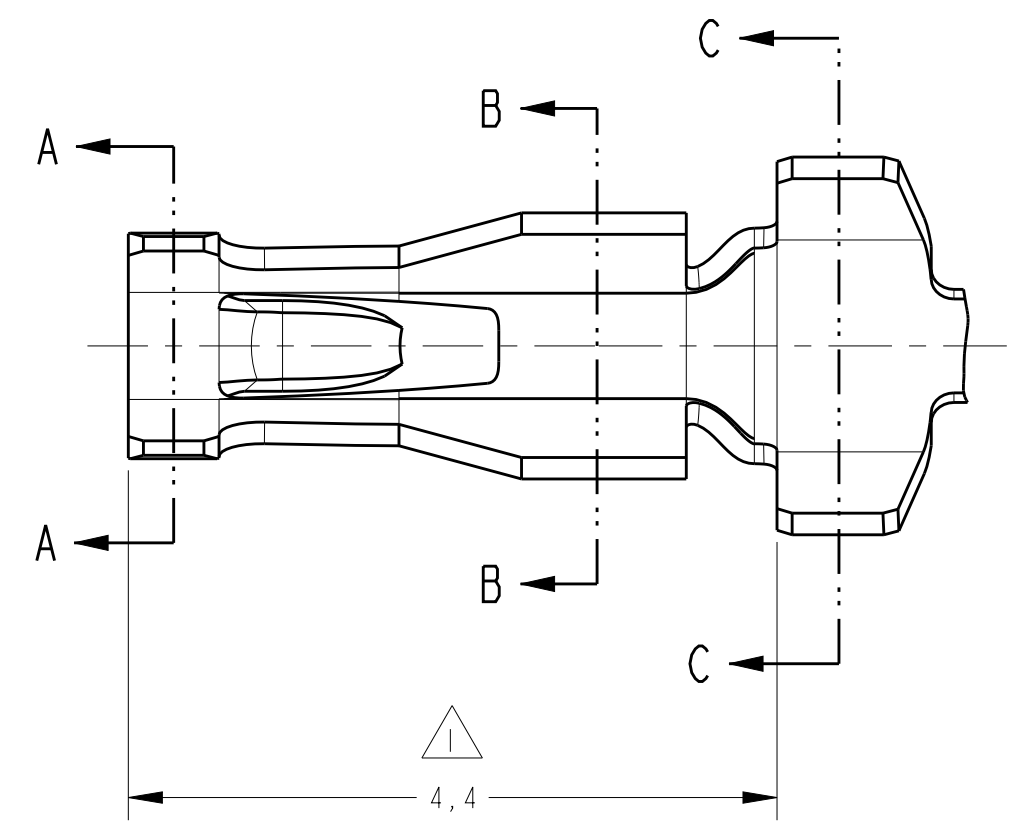
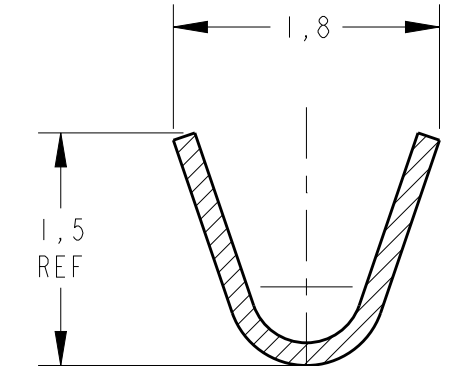


THIS DRAWING IS UNPUBLISHED. RELEASED FOR PUBLICATION 20
 © COPYRIGHT 20 BY - ALL RIGHTS RESERVED.

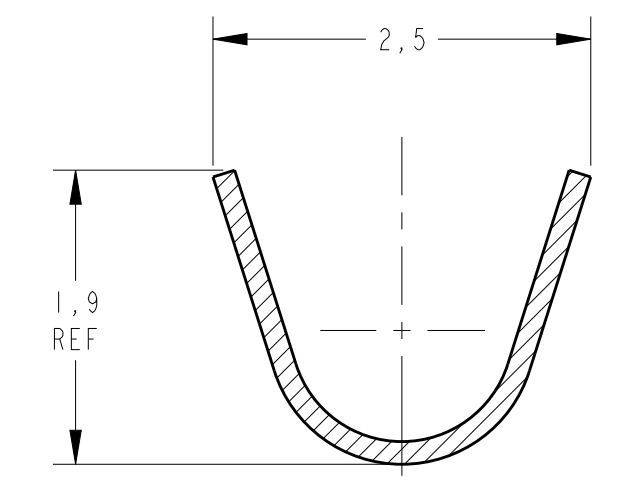
LOC	DIST	REVISIONS					
AP	-	P	LTR	DESCRIPTION	DATE	DWN	APVD
		D2		REDRAW BY CAD ECO-12-018411	19OCT2012	NCL	WAO
		D3		REV. BY ECO 13-011931	25JUL2013	HC	WLS
		D4		REVISED BY ECO-20-015098	29OCT2020	PSB	DAO



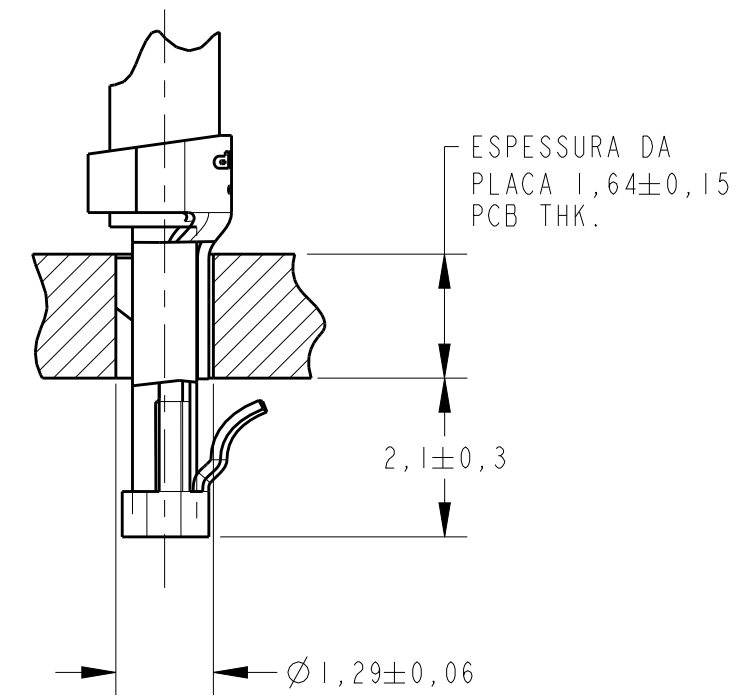
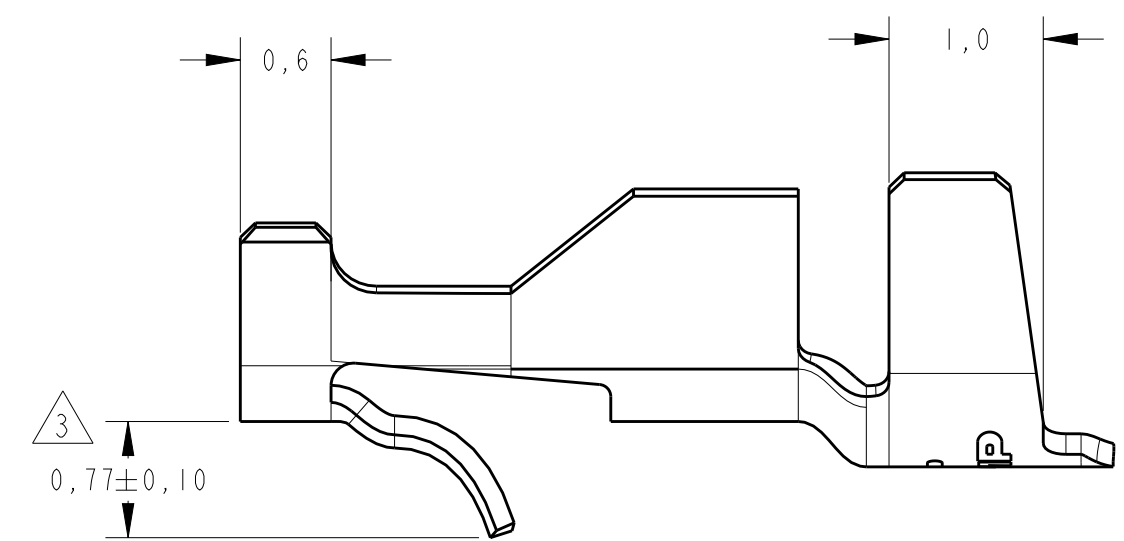
SECTION A-A
SCALE 20:1



SECTION B-B
SCALE 20:1



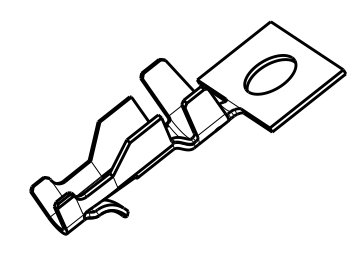
SECTION C-C
SCALE 20:1



SECTION X-X
SCALE 10:1

- 1 - SOLDABILIDADE DE ACORDO COM ESPEC. TE 109-11-5
- SOLDERABLE PER TE SPEC. 109-11-5
- 2 - O TERMINAL DEVE RESISTIR A UMA FORÇA DE ARRANCAMENTO DO CONDUTOR DE 8,9N MIN.
- THE CRIMP TENSILE OF WIRE MUST WITHSTAND 8,9N MIN.
- 3 - ALTURA DA TAVA APÓS APLICAÇÃO: 0,60-0,95.
- LOCKING LANCE HEIGHT AFTER CRIMPING: 0,60-0,95.

Ø1,52mm MAX	24 AWG	EBLF-18B939-FA	PRÉ ESTANHADO S/NICKEL	LATÃO / BRASS	444082 -2
Ø1,35mm MAX	24 AWG			LATÃO / BRASS	444082 -1
INS. RANGE	WIRE RANGE	PART NUMBER FORD	FINISH	MATERIAL	PART NUMBER



PERSPECTIVE VIEW
SCALE 5:1

THIS DRAWING IS A CONTROLLED DOCUMENT.

DIMENSIONS:	TOLERANCES UNLESS OTHERWISE SPECIFIED:	DWN	NCLAPRESA	19OCT2012
mm	0 PLC ±	CHK	JRGOLDSCHMIDT	19OCT2012
	1 PLC ±	APVD	DAO IVEIRA	19OCT2012
	2 PLC ±0,3	PRODUCT SPEC		
	3 PLC ±	APPLICATION SPEC		
	4 PLC ±	WEIGHT		
	ANGLES ±1°	CUSTOMER DRAWING		
MATERIAL	FINISH	SIZE	CAGE CODE	DRAWING NO
		A2	00779	C-444082

NAME: CONTACT-SHORT VERSION 11 - MINI AMP-IN

RESTRICTED TO: 18.1 SHEET OF 1 REV D4