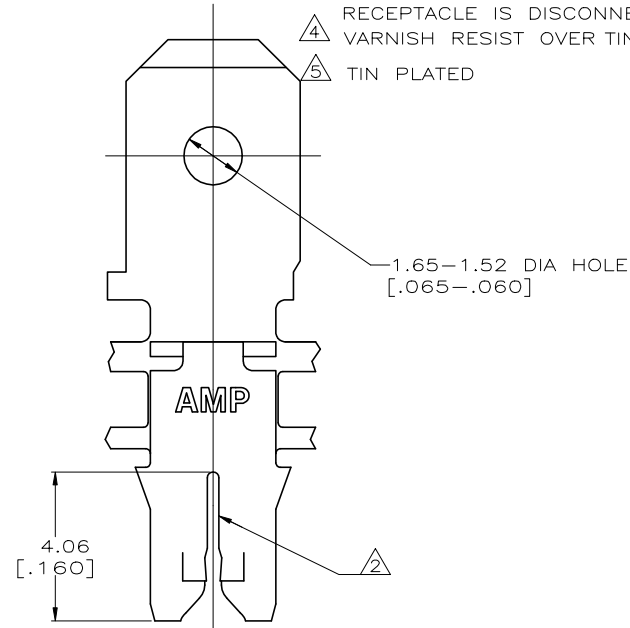
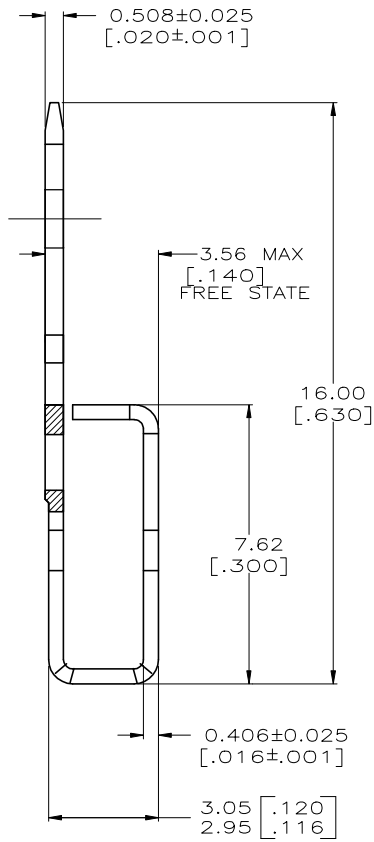
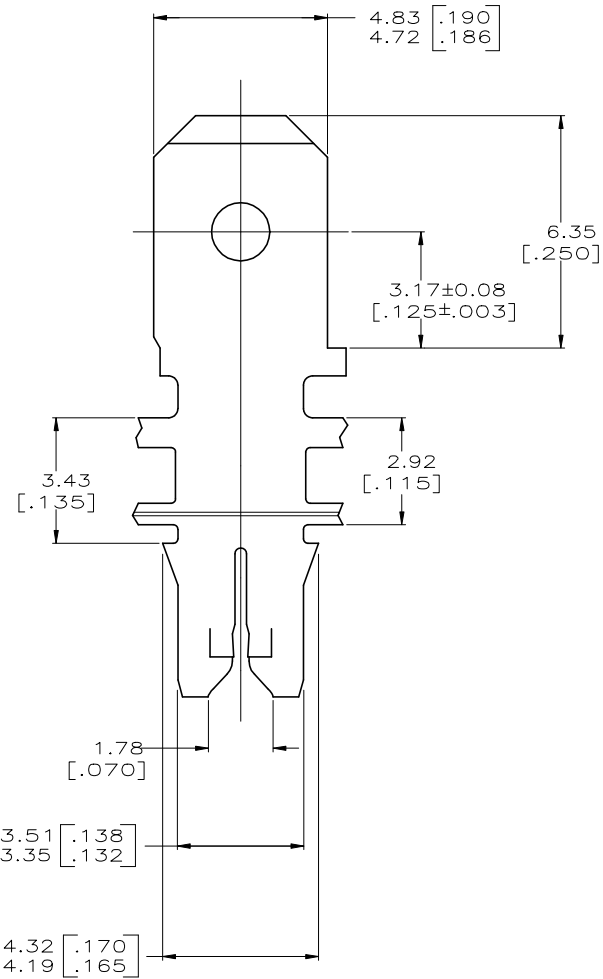
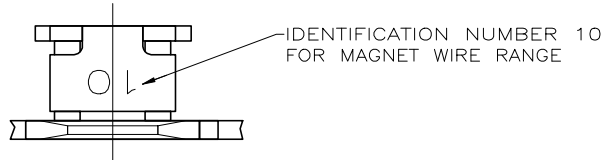


THIS DRAWING IS UNPUBLISHED. RELEASED FOR PUBLICATION  
 © COPYRIGHT - By - ALL RIGHTS RESERVED.

LOC		DIST		REVISIONS				
P	LT/R	DESCRIPTION			DATE	DWN	APVD	
AF	50	D2	REVISED PER ECR-18-009392			01APR2019	BDA	SV



- CONTINUOUS STRIP ON REELS WITH TERMINALS LOCATED ON 5.59±0.08 [.220±.003] CENTERS SLOT TERMINATES EITHER A SINGLE OR DOUBLE MAGNET WIRE OF THE SAME SIZE AND TYPE. COPPER RANGE: 0.36-0.57mm [#27-#23] AWG. OR AL RANGE: 0.51-0.64mm [#24-#22] AWG ALUMINIUM RANGE IS APPLICABLE FOR POST TIN PLATED PART NUMBERS ONLY
- AFTER INSERTION INTO PLASTIC HOLDER TAB PORTION MUST BE BENT OVER 45° OR 90° OR POTTED-IN TO PREVENT PULL-OUT WHEN MATING RECEPTACLE IS DISCONNECTED.
- TIN PLATED

5	63664-2
4	63664-1

THIS DRAWING IS A CONTROLLED DOCUMENT.		DWN: MICHAEL S. FEHER 8/26/92	TE Connectivity	
		CHK: JEFF R. RUTH 8/26/92		
DIMENSIONS: INCHES		APVD: NELSON F. NEFF 8/28/92	NAME: TERMINAL, TAB, 4.75 [.187] FASTON, MAG-MATE	
TOLERANCES UNLESS OTHERWISE SPECIFIED:		PRODUCT SPEC: 108-2012	SIZE: A2	
0 PLC ± -		APPLICATION SPEC: 114-2046	CAGE CODE: 00779	
1 PLC ± -			DRAWING NO: 63664	
2 PLC ± 0.25 [010]			RESTRICTED TO: -	
3 PLC ± -			SCALE: 10:1	
4 PLC ± -			SHEET: 1 of 1	
ANGLES ± -			REV: D2	
MATERIAL: BRASS	FINISH: SEE TABLE	WEIGHT: -	CUSTOMER DRAWING	