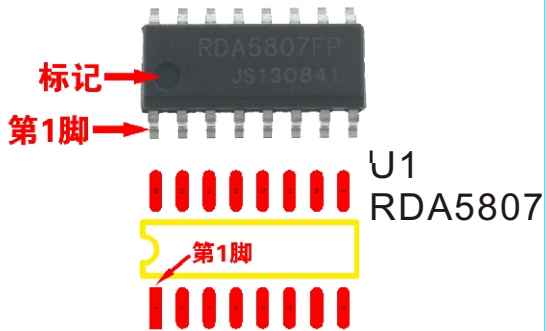


所需工具:

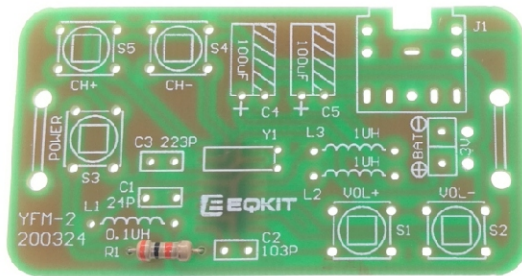
- ①电烙铁30W
- ②焊锡丝0.8mm
- ③万用电表
- ④镊子
- ⑤斜口钳

注意事项:

- ①对照元器件清单清点和辨识元件的数量和规格
- ②用万用表检查确认所有电阻阻值
- ③预先将元件极性和电路板上的安装方向确认一遍

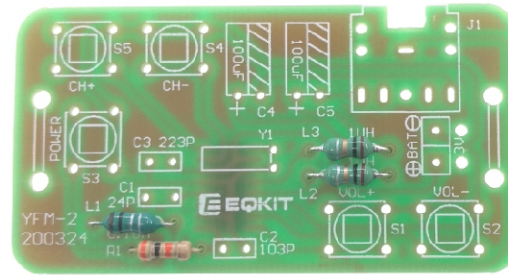


1. 焊接芯片(注意芯片方向)



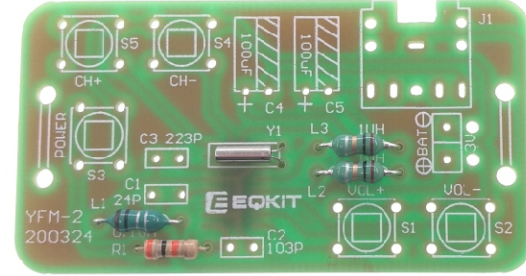
2. 焊接电阻 R1 30K

所有元件引脚在焊完后剪掉多余的引脚



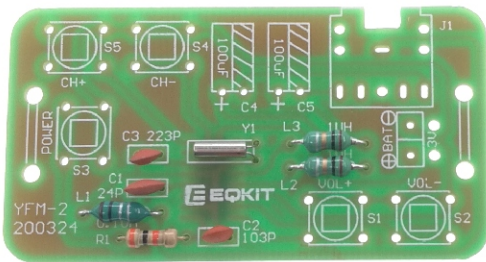
3. 焊接电感

L1 0.1UH
L2 L3 1UH



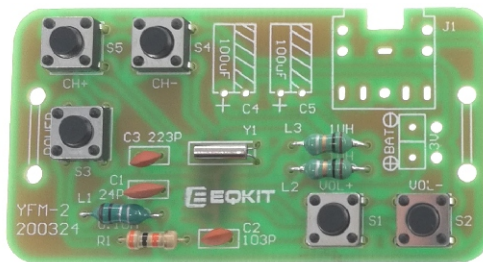
4. 焊接晶振

Y1 32.768k



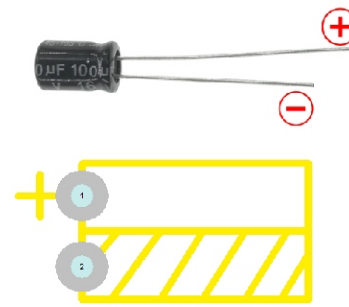
5. 焊接陶瓷电容

C1 24PF
C2 103PF
C3 223PF

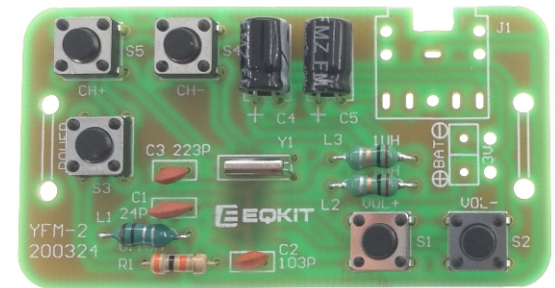


6. 焊接轻触开关

6X6X5 S1--S5

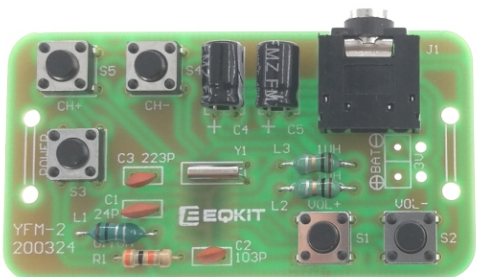


7. 焊接电解电容(有方向)

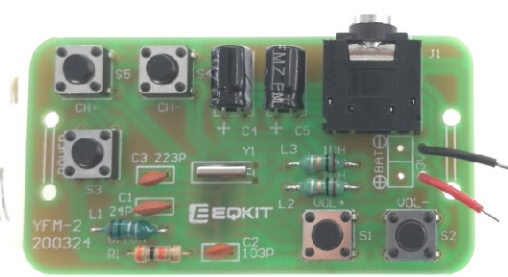


电解电容长脚是正极

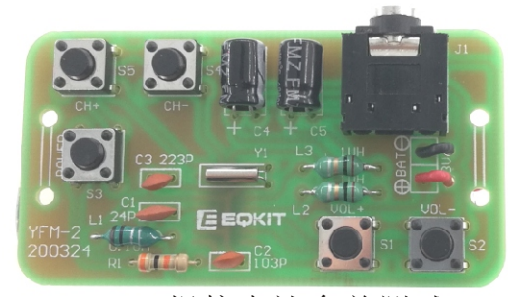
C4 C5 100UF/16V



8. 焊接耳机插座

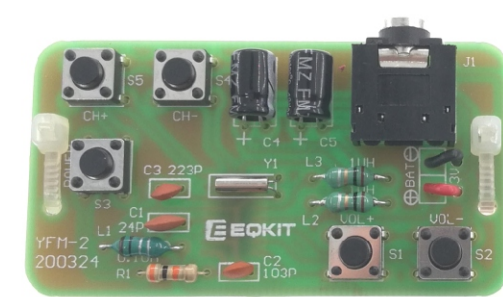


9. 电池盒导线穿过孔, 剪掉多余的导线。



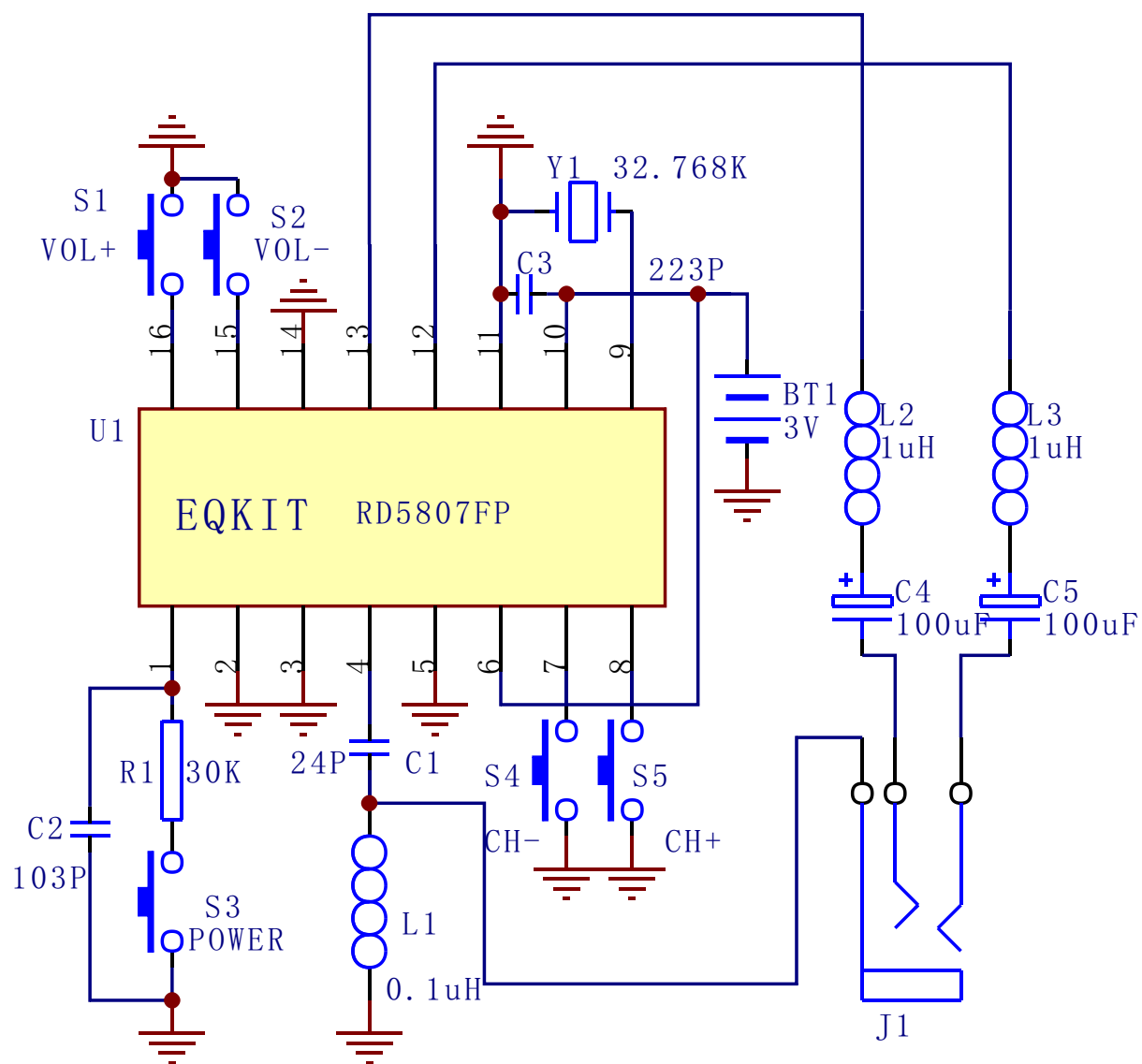
10. 焊接电池盒并测试

- (1). 焊接导线 (注意极性)
- (2). 装上电池测试, 能正常工作后再继续后面的步骤。



11. 用尼龙扎带固定电池盒, 剪掉多余的扎带。

电路图



元件清单

名称	规格	编号	数量
电阻	30K	R1	1
电感	0.1UH	L1	1
	1UH	L2 L3	2
陶瓷电容	24PF	C1	1
	103PF	C2	1
	223PF	C3	1
电解电容	100UF/16V	C4 C5	2
晶振	32.768K	Y1	1
轻触开关	6*6*5	S1--S5	5
耳机插座	3.5mm	J1	1
芯片	RDA5807PF	U1	1
PCB	56*30mm	1	1
尼龙扎带	3*60mm	3	3
电池盒	AA*2	1	1