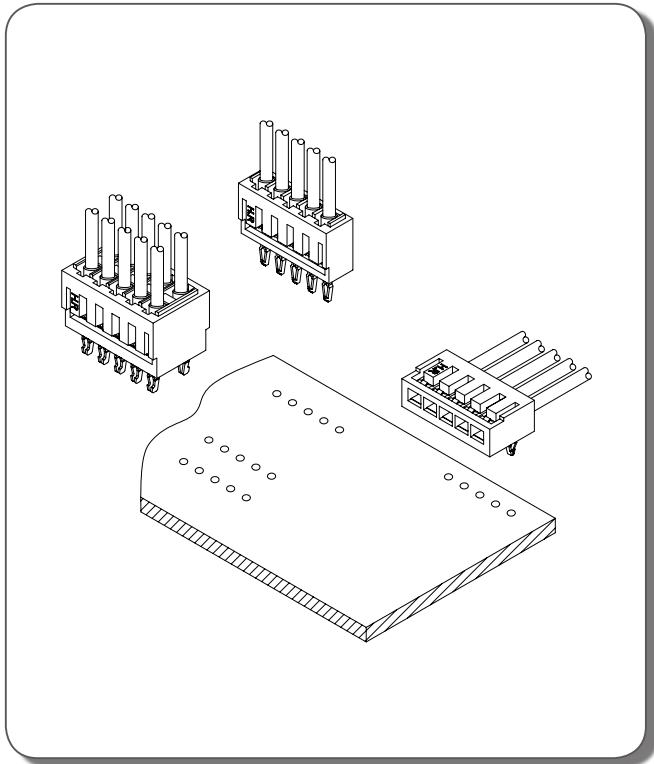




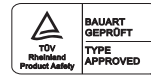
A
B
C
F



Specifications

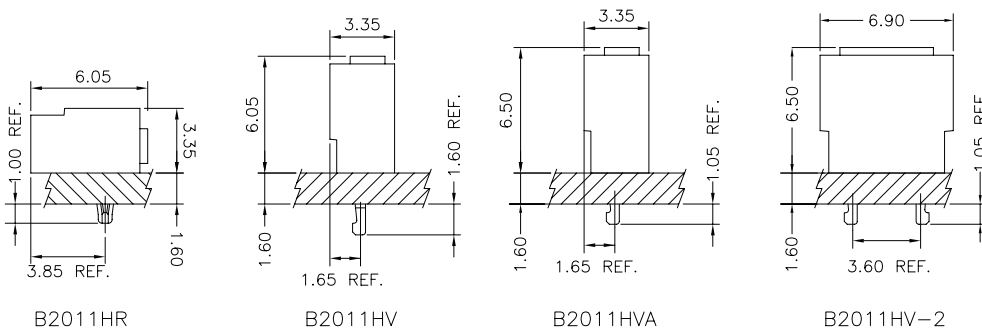
Current Rating: 1A~2A AC,DC(Per Pin)
 Voltage Rating: 250V AC,DC(Per Pin)
 Temperature Range: -25°C ~ +85°C
 Contact Resistance: 20mΩ Max.
 Insulation Resistance: 1000MΩ Min.
 Withstanding Voltage: 800V AC/minute
 Contact H.R for Details

Standards



R 50004394

Assembly Layout



Ordering Code

① B2011 ② X-X ③ X X ④ X

- ① Series No.
- ② Terminal Type: V=Vertical, R=Right Angle
- ③ Plating Code: T=Tin-Plated, M=Matte Tin-Plated
- ④ Material: B=Brass
- ⑤ E=Stamping Before Plating

① B2011 ② XX ③ X-2X ④ NP

- ① Series No.
- ② Housing Type: HV=Vertical Housing, HR=Right Angle Housing
- ③ Blank=Normal Type, A=A Type
- ④ Blank=Single Row, 2X=Dual Row
- ⑤ No. of Circuits



B2011 SERIES

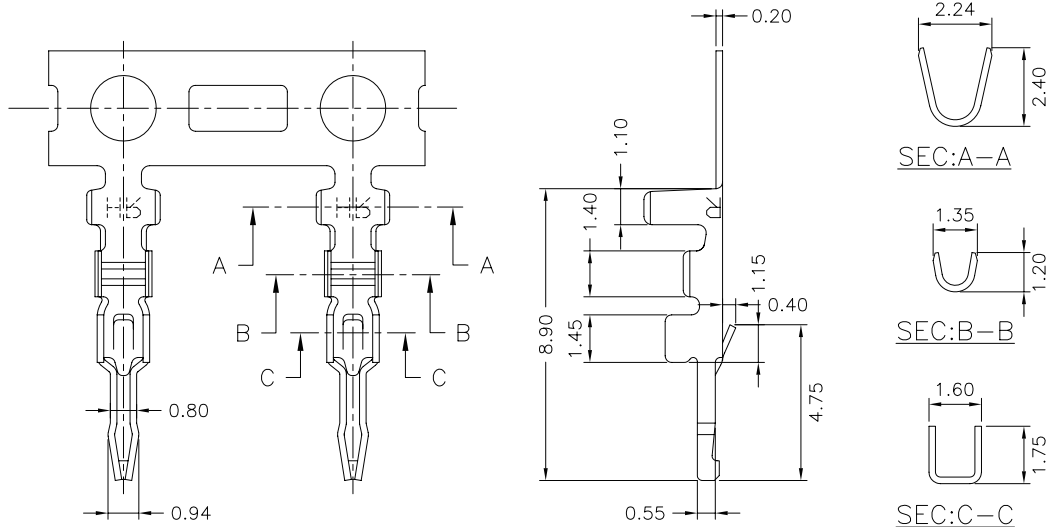
2.00mm Pitch Board-in Connector

B2011V-XXX

2.00mm Pitch 180° Crimp Terminal

Reference Information:

*Used in H.R B2011HV Series Housing



Ordering Information & Specifications:

Unit:mm

Part No.	Wire Range	Insulation O.D.	Material	Finish	Qty/Reel
B2011V-TBE	AWG#24-#30	1.30mm(Max)	Brass	Tin-Plated	10,000Pcs
B2011V-MBE	AWG#24-#30	1.30mm(Max)	Brass	Matte Tin	10,000Pcs

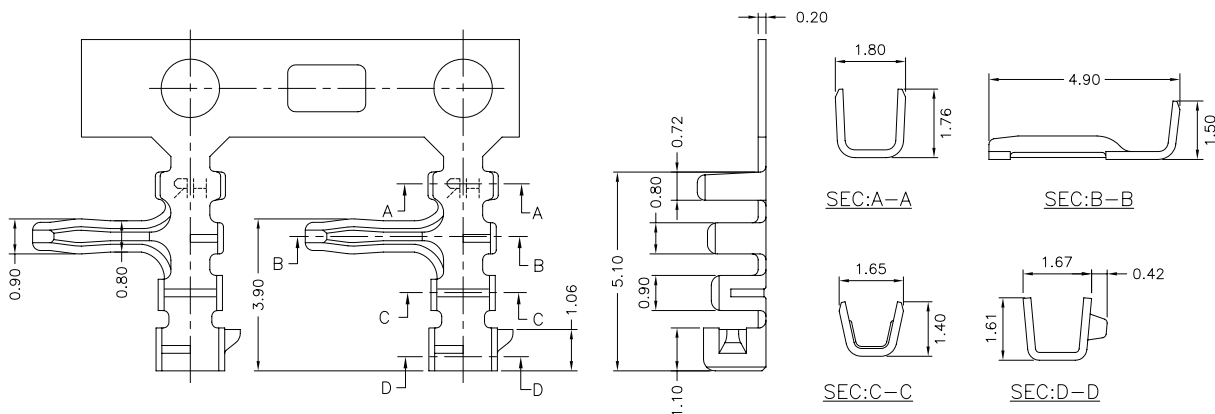
Note:E-Stamping Before Plating

B2011R-XXX

2.00mm Pitch 90° Crimp Terminal

Reference Information:

*Used in H.R B2011HR Series Housing



Ordering Information & Specifications:

Unit:mm

Part No.	Wire Range	Insulation O.D.	Material	Finish	Qty/Reel
B2011R-TBE	AWG#24-#30	1.30mm(Max)	Brass	Tin-Plated	10,000Pcs

Note:E-Stamping Before Plating

TEL:0769-83970035

FAX:0769-83970023

HTTP://www.hr-connector.com





B2011 SERIES

2.00mm Pitch Board-in Connector

B2011HV

2.00mm Pitch 180° Housing

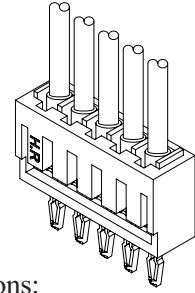
Reference Information:

*Material: Thermoplastic

*Suitable H.R B2011V Series Terminal

B2011HV-XP	X	X	X	XX	X	XX	X
	①	②	③	④	⑤	⑥	⑦

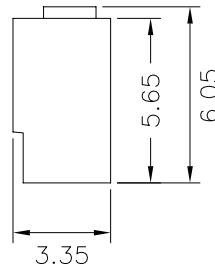
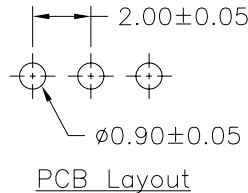
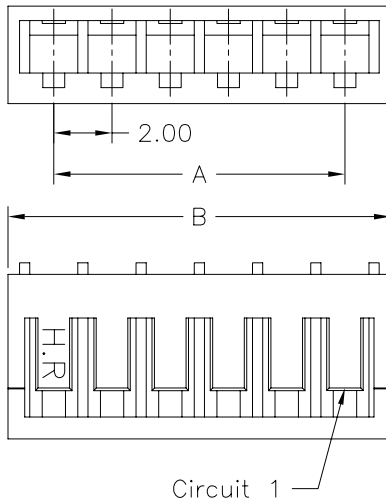
① Halogen Free or Not
② Material
③ Color
④ Plating Code for Contacts
⑤ Plating Code
⑥ Option Code
⑦ Packing Code



Dimensions:

Circuit No.	Dimensions	
	A	B
02	2.00	5.15
03	4.00	7.15
04	6.00	9.15
05	8.00	11.15
06	10.00	13.15
07	12.00	15.15
08	14.00	17.15
09	16.00	19.15
10	18.00	21.15
11	20.00	23.15
12	22.00	25.15
13	24.00	27.15
14	26.00	29.15
15	28.00	31.15
16	30.00	33.15

Unit:mm



A
B
C
F

B2011HVA

2.00mm Pitch 180° Housing

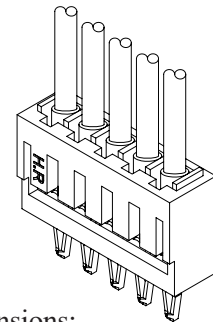
Reference Information:

*Material: Thermoplastic

*Suitable H.R B2011V Series Terminal

B2011HVA-XP	X	X	X	XX	X	XX	X
	①	②	③	④	⑤	⑥	⑦

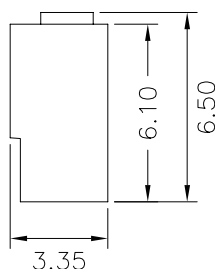
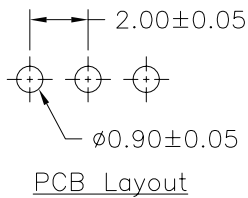
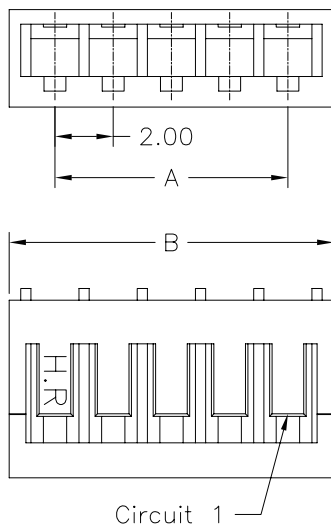
① Halogen Free or Not
② Material
③ Color
④ Plating Code for Contacts
⑤ Plating Code
⑥ Option Code
⑦ Packing Code



Dimensions:

Circuit No.	Dimensions	
	A	B
02	2.00	5.15
03	4.00	7.15
04	6.00	9.15
05	8.00	11.15
06	10.00	13.15
07	12.00	15.15
08	14.00	17.15
09	16.00	19.15
10	18.00	21.15
11	20.00	23.15
12	22.00	25.15
13	24.00	27.15
14	26.00	29.15
15	28.00	31.15
16	30.00	33.15

Unit:mm





B2011HR

2.00mm Pitch 90° Housing

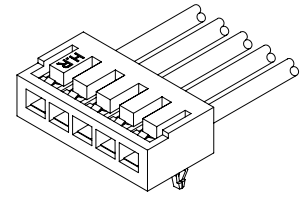
Reference Information:

*Material: Thermoplastic

*Suitable H.R B2011R Series Terminal

B2011HR-XP	X	X	X	XX	X	XX	X
	①	②	③	④	⑤	⑥	⑦

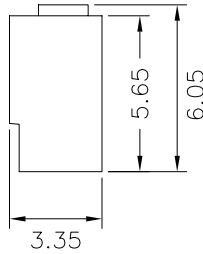
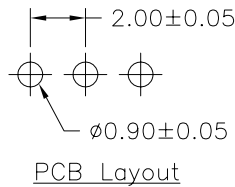
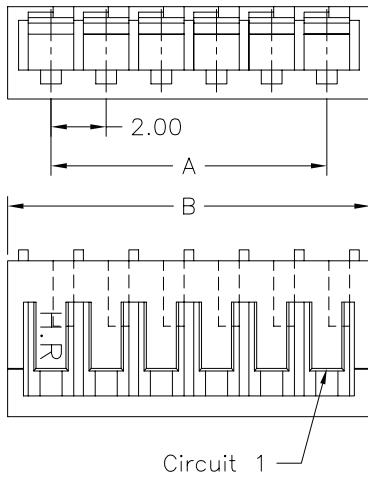
① Halogen Free or Not
② Material
③ Color
④ Plating Code for Contacts
⑤ Plating Code
⑥ Option Code
⑦ Packing Code



Dimensions:

Circuit No.	Dimensions	
	A	B
02	2.00	5.15
03	4.00	7.15
04	6.00	9.15
05	8.00	11.15
06	10.00	13.15
07	12.00	15.15
08	14.00	17.15
09	16.00	19.15
10	18.00	21.15
11	20.00	23.15
12	22.00	25.15
13	24.00	27.15
14	26.00	29.15
15	28.00	31.15
16	30.00	33.15

Unit:mm



A
B
C
F

B2011HV-2

2.00mm Pitch 180° Dual Row Housing

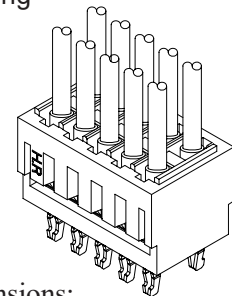
Reference Information:

*Material: Thermoplastic

*Suitable H.R B2011V Series Terminal

B2011HV-2XNP	X	X	X	XX	X	XX	X
	①	②	③	④	⑤	⑥	⑦

① Halogen Free or Not
② Material
③ Color
④ Plating Code for Contacts
⑤ Plating Code
⑥ Option Code
⑦ Packing Code



Dimensions:

Circuit No.	Dimensions	
	A	B
2X02	2.00	5.20
2X03	4.00	7.20
2X04	6.00	9.20
2X05	8.00	11.20
2X06	10.00	13.20
2X07	12.00	15.20
2X08	14.00	17.20
2X09	16.00	19.20
2X10	18.00	21.20
2X11	20.00	23.20
2X12	22.00	25.20
2X13	24.00	27.20
2X14	26.00	29.20
2X15	28.00	31.20
2X16	30.00	33.20

Unit:mm

